



-  *All components are produced by MTH*
- Easy assembly*
- Hygienic profiles already integrated in junction edges*
- Certified CSI door handle*
- Modularity step 200 mm*

-  Tutti i componenti sono di produzione MTH
- Facilità di montaggio
- Profili sanitari già integrati nel cantonale
- Maniglia porta CSI certificata
- Modularità passo 200 mm

Mini cold-rooms **Mini celle frigorifere**



Technical Details

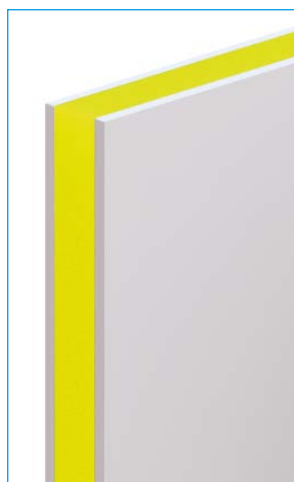
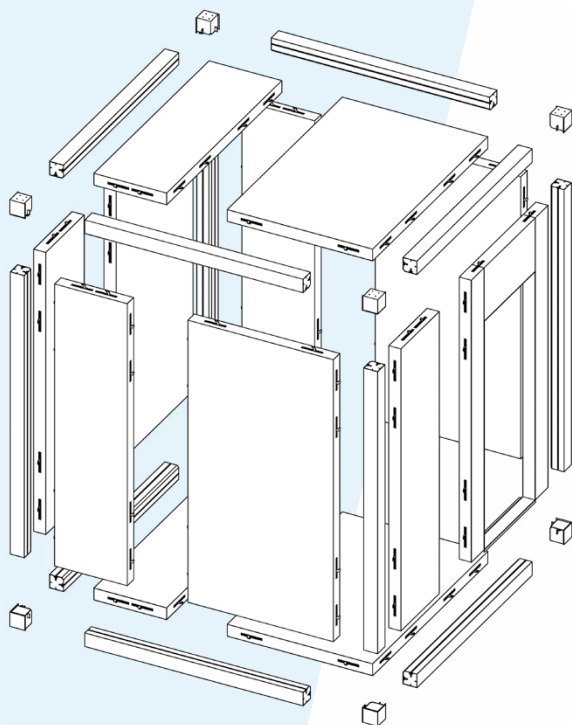
Features Caratteristiche

MTH, leader in the commercial and industrial refrigeration sector, has developed a complete range of mini cold-rooms, realized through modular panels.

The high level of innovation and the quality of the materials guarantee their use in different sectors, where thermal insulation, hygiene and easy assembly are essential prerequisites.

MTH, leader nel settore della refrigerazione commerciale ed industriale, ha sviluppato una gamma completa di mini celle frigorifere, composte da pannelli modulari.

L'impegno continuo nell'innovazione e la qualità dei materiali impiegati garantiscono il loro utilizzo in diversi settori, dove isolamento termico, igiene e praticità di montaggio sono presupposti indispensabili.



Panel made with CFC free polyurethane foam high density (about 40 kg/m³) and covered with 5/10 mm thick galvanized plasticised metal sheet RAL9010

Pannelli schiumati con poliuretano espanso ad alta densità 40 kg/m³ e rivestimenti con lamiera zinco-plasticata di spessore 5/10 mm RAL9010

Hook fixation for quick assembly without equipment

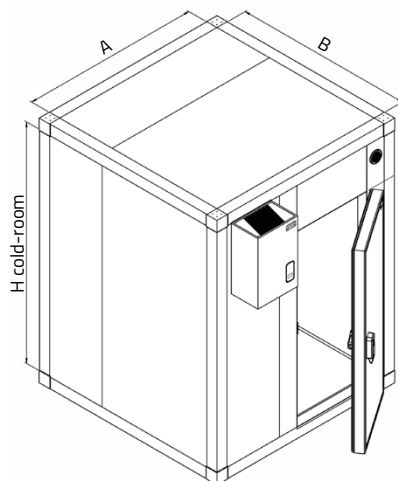
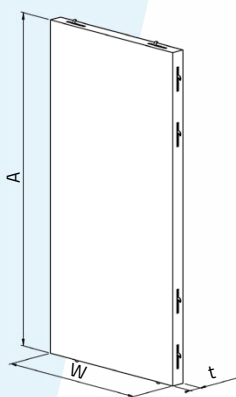
Ganci di serraggio ad eccentrico per montaggio rapido e senza attrezzatura



MODEL	TEMPERATURE RANGE	PANEL THICKNESS (mm)	WITH FLOOR	WITHOUT FLOOR	COMPENSATING VALVE	DOOR THICKNESS (mm)	HEATING CABLE IN DOOR GASKET
C06	T > 0°C	60	A	A	NO	68	NO
C08	T > 0°C to -18°C**	80	A	N/A	NO	68	NO
C10	up to -20°C	100	A	N/A	YES	92*	YES

CP = Cold-room with floor | SP = Cold-room without floor | A = Available | N/A = Not available

* OPTION: 68 mm thick door without heating cable | **OPTION: door blade 92 mm thick with heating cable, compensating valve



COLD-ROOM INTERNAL DIMENSIONS (mm)***

A	From 1200 to 3000 (Step 200)
B	From 1200 to 6000 (Step 200)
H cold-room	From 2000 to 3000 (Step 200)

COLD-ROOM EXTERNAL DIMENSIONS (mm)***

C06 - SP	A + 140	B + 140	H cold-room + 70
C06 - CP			H cold-room + 140
C08 - CP	A + 170	B + 170	H cold-room + 170
C10 - CP	A + 230	B + 230	H cold-room + 230

CP = Cold-room with floor

SP = Cold-room without floor

** Panels are provided without holes for the monoblock

*** The monoblock in the picture is an OPTION

PANEL DIMENSIONS (mm)**

A	From 1200 to 3000 (Step 200)
w	From 400 to 1200 (Step 200)
t	60 - 80 - 100

Technical Details

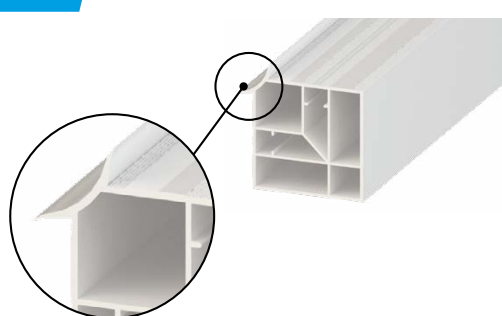
The MTH cold-rooms don't require the installation of hygienic profiles because corners and junctions are designed and produced to eliminate already the angles inside the cold-room.

The hygienic indeed profile is integrated in the corner for the cold-rooms with floor and in the "U" PVC profile for the cold-rooms without floor.

Le celle frigorifere MTH non necessitano dell'installazione dei profili sanitari, perché i cantonali e le giunzioni sono già progettati e realizzati in modo tale da eliminare gli angoli all'interno della cella.

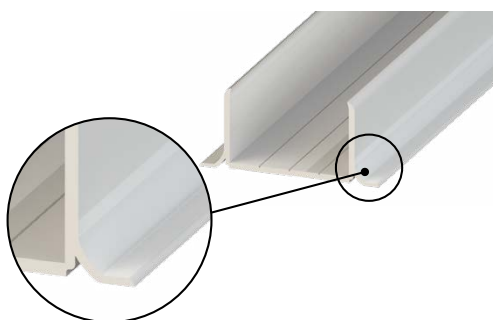
Il profilo sanitario, infatti, è integrato nel cantonale per le celle con pavimento e nel profilo PVC ad "U" per le celle senza pavimento.

C06



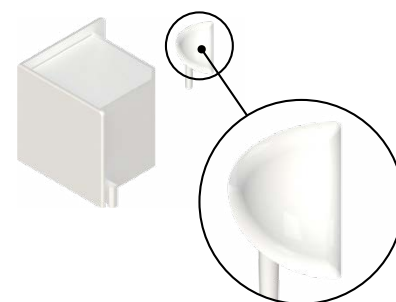
Hygienic profile integrated in junction edges C06

Profilo sanitario integrato nel cantonale C06



Hygienic profile integrated in "U" PVC profiles C06

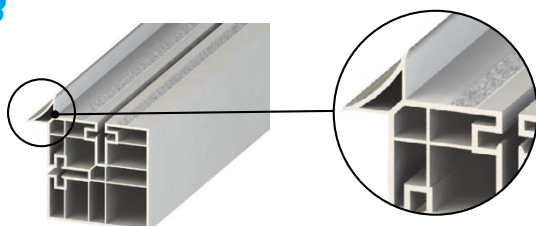
Profilo sanitario integrato nel profilo PVC ad "U" C06



PVC angular joint for smoothed internal junctions C06

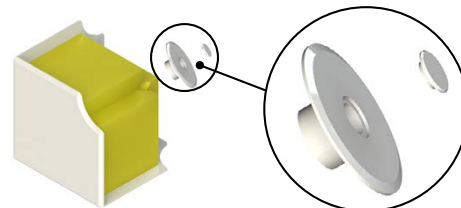
Angolare in PVC per giunzioni interne smussate C06

C08



Hygienic profile integrated in junction edges C08

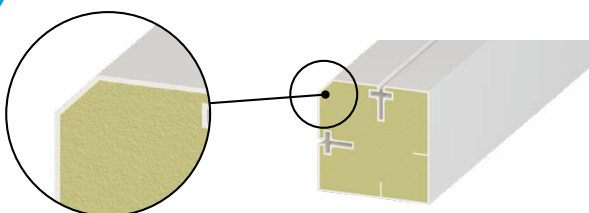
Profilo sanitario integrato nel cantonale C08



PVC angular joint for smoothed internal junctions C08

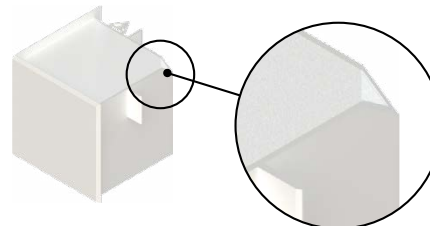
Angolare in PVC per giunzioni interne smussate C08

C10



PVC junction edges C10, with polyurethane foam for low temperature application eliminate angles inside the cold-room

Cantonali in PVC C10 schiumati per applicazione in bassa temperatura eliminano gli angoli interni alla cella



PVC angular joint for smoothed internal junctions C10

Angolare in PVC per giunzioni interne smussate C10

Optional accessories Accessori su richiesta

- internal light
- stripes curtains
- spacers
- modular aluminium shelving system
- smooth stainless steel floor
- stainless steel threshold

- luce interna
- tende a strisce
- distanziali
- scaffalatura modulare in alluminio
- pavimento in inox liscio
- soglia in lamiera inox

MTH products for cold-rooms

Hinged doors for cold-rooms

Porte su cerniera per celle frigorifere

MTH, leader in the production and sale of commercial and industrial refrigeration doors, presents within its range two models of hinged doors for cold-rooms. The doors, as well as the cold-rooms, are entirely of MTH production and can be installed on cold-rooms.

MTH, leader nella produzione e vendita di porte frigorifere commerciali ed industriali, presenta all'interno della sua gamma due modelli di porte su cerniera per celle frigorifere. Le porte, così come le celle, sono interamente di produzione MTH e possono essere installate sulle nostre celle.



500 TN

- Hinged door suitable for cold-rooms with CSI handle certified EN179:2008
- Blade thickness 68 mm
- For positive temperature, 0° C minimum
- Porta a battente adatta per celle frigorifere con maniglia CSI certificata EN179:2008
- Spessore battente 68 mm
- Per temperatura positiva, 0° C minimo



603 LWT

- Hinged door suitable for cold-rooms with CSI handle certified EN179:2008
- Blade thickness 92 mm
- For negative temperature, up to -20° C
- Porta a battente adatta per celle frigorifere con maniglia CSI certificata EN179:2008
- Spessore battente 92 mm
- Per temperatura negativa, fino a -20° C

Wall mounted and ceiling monoblocks for cold-rooms

Monoblocchi a parete e a soffitto per minicelle

MTH over the years specialized his design and production of refrigeration units, monoblocks and silenced unit. In its range there are monoblocks for commercial cold-rooms, wall-mounted and ceiling models

MTH negli anni si è specializzata nella progettazione e costruzione di unità frigorifere ermetiche, monoblocchi e unità silenziate. All'interno della sua gamma sono presenti monoblocchi a parete e a soffitto installabili su mini celle.



UMS

- Plug-in monoblocks designed for ceiling application in cold-rooms.
- Positive Application (-5° C ÷ +5° C) and Low Temperature (-25° C ÷ -15° C)
- Gas R452A
- Cold-room light and fan cut off microswitch

- Monoblocco plug-in per applicazione su soffitto a tampono per celle frigorifere.
- Temperatura positiva (-5° C ÷ +5° C) e bassa temperatura (-25° C ÷ -15° C)
- Gas R452A
- Luce cella e micro per esclusione della ventilazione

- Plug-in monoblocks designed for straddle and through mounting in cold-rooms.
- Positive Application (-5° C ÷ +5° C) and Low Temperature (-25° C ÷ -15° C)
- Refrigerants: R452A and R290
- Electrical or hot gas defros

- Monoblocco plug-in per applicazione a parete (a zaino o a tampono) per celle frigorifere
- Temperatura positiva (-5° C ÷ +5° C) e bassa temperatura (-25° C ÷ -15° C)
- Gas R452A e R290
- Sbrinamento elettrico o a gas caldo

UMZ



Compensating valves for cold-rooms

Valvole di compensazione per minicelle

MTH presents a variety of compensating valves for cold-rooms to keep the internal and external pressures balanced.

MTH offre una vasta gamma di valvole di compensazione per mantenere equilibrata la pressione interna ed esterna alla cella frigorifera.

